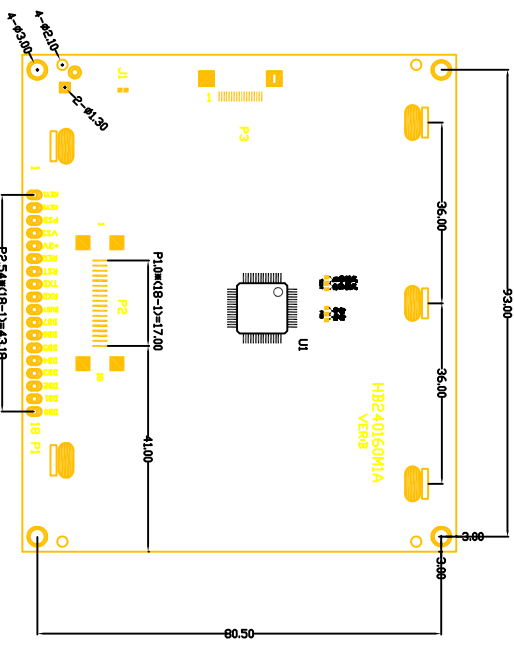


SCALE: 10:1



P1,P2

| PIN NO. | SIGNAL | PIN NO. | SIGNAL | PIN NO. | SIGNAL |
|---------|--------|---------|--------|---------|--------|
| 1 | KEY1 | 7 | RST | 13 | DB5 |
| 2 | KEY2 | 8 | TXD | 14 | DB4 |
| 3 | PSB | 9 | RXD | 15 | DB3 |
| 4 | VSS | 10 | BUSY | 16 | DB2 |
| 5 | +3V | 11 | DB7 | 17 | DB1 |
| 6 | RRQ | 12 | DB6 | 18 | DB0 |

P3

| PIN NO. | SIGNAL | PIN NO. | SIGNAL | PIN NO. | SIGNAL |
|---------|--------|---------|--------|---------|--------|
| 1 | N.C | 7 | TXD | 13 | N.C |
| 2 | N.C | 8 | TXD | 14 | N.C |
| 3 | VSS | 9 | N.C | 15 | VDD |
| 4 | VSS | 10 | N.C | 16 | VDD |
| 5 | N.C | 11 | RXD | 17 | N.C |
| 6 | N.C | 12 | RXD | 18 | N.C |

- NOTE**
- 1 DISPLAY TYPE : : FSTN/POSITIVE
 - 2 VIEWING DIRECTION : : 6 0° CLOCK
 - 3 POLARIZER MODE : : TRANSPARENT
 - 4 DRIVE METHOD : : 1/160DUTY 1/10BIAS
 - 5 OPERATING VOLTAGE : : 15.0V
 - 6 LOGIC VOLTAGE : : 3.0 V
 - 7 CONTROLLER IC : : ST15668A
 - 8 OPERATING TEMP : : -10° C ~ 60° C
 - 9 STORAGE TEMP : : -20° C ~ 70° C
 - 10 BACK LIGHT : : LED/

| | | | |
|-------------------------|--|------------------------------------|--|
| MODEL NO. : ZX240160M1A | | 北京中显电子有限公司 | |
| DESIGNED BY: 陶洋 | | TEL: 010-8262833 FAX: 010-51601226 | |
| CHECKED BY: | | DATE: 1 1 1 | |
| APPROVED BY: | | SCALE: 1:1 | |
| | | | |
| DEFAULT TOLERANCE: ±0.2 | | DATE: 1 1 1 | |