

Version:1.1

SPECIFICATION

SAGV8111-ADV

Customer Approved

Customer _____

Date _____

By _____

Sailing's Confirmation

Approved By _____

Prepared By _____

Date: 2006.4.12

CONTENTS

| | |
|--|---|
| General Description | 1 |
| Features..... | 1 |
| Application Scope..... | 1 |
| Driver Board Introduction..... | 2 |
| 1. Brief Diagram..... | 2 |
| 2. Port Definition..... | 2 |
| 3. Pin Assignment..... | 3 |
| Inverter Board Introduction | 4 |
| 1. Brief Diagram..... | 4 |
| 2. Port Definition..... | 4 |
| 3. Pin Assignment..... | 4 |
| Keyboard Function Introduction..... | 5 |
| 1. Brief Diagram..... | 5 |
| 2. Connector Definition..... | 5 |
| 3. Keyboard Function Description | 5 |
| Mechanical Drawing..... | 6 |

GENERAL DESCRIPTION

- ◆ APPLY TO MULTIPLE LCD MODULE: PD104VT2
- ◆ VGA AND VIDEO AND S-VIDEO INPUT SYSTEM

f_H : 48.1 KHz f_H :37.9KHz f_H :35.1KHz f_H :31.5KHz

f_V : 85Hz f_V : 75Hz f_V : 72Hz f_V : 60 Hz f_V : 56 Hz

DOT CLK: 50Mhz DOT CLK: 40Mhz DOT CLK: 36Mhz DOT CLK: 25.175Mhz

- ◆ POWER SOURCE DC 12V
- ◆ POWER CONSUMPTION 700 mA , 8.4W Max.
- ◆ OPERATING TEMPERATURE 0°C ~ 60°C
- ◆ STORAGE TEMPERATURE -20°C ~ 80°C
- ◆ WEIGHT <100g

FEATURES

- ◆ VGA /SVGA/XGA INPUTS
- ◆ 6-BIT RGB OUTPUT
- ◆ CONVENIENTLY ADJUST IMAGE BY OPERATING KEYBOARD
- ◆ SUPPORT INTERGRATED PLL TECHNOLOGY
- ◆ LOW POWER COMSUMPTION

APPLICATION SCOPE

- SECURITY
- PC MONITOR
- INDUSTRY CONTROL MONITOR
- POS

DRIVER BOARD INTRODUCTION

1. Brief Diagram (Refer Appendix Page For Details)

2. Port Definition

- CN1 -----Connection port of Driver Board to LCD (TTL);
- CN12-----Connection port of Driver Board to LCD (FPC compatible with Tx18D11)
- CN2-----Connection with LCD (FPC compatible with LQ080v3DG01)
- CN3 -----Keyboard operation port;
- CN4A -----Power input port (DC12V) (2PIN)
- CN4B-----Power input port (DC12V)
- CN5 -----Output port for inverter.
- CN6 -----Analog VGA input port (12 pin);
- CN17-----YPbPr input port;

- j) CN8 -----Video & S-Video input;
- k) CN11-----TV INPUT
- l) CN14C-----Connection port of AUDIO IN;
- m) CN15A -----Connection port of SPEAKER OUT;
- n) CON2 CVBS OUTPUT;
- o) CN19 Test port for factory;
- p) VGA CABLE

*** All ports define square pad as the first position in this book.**

3. PIN ASSIGNMENT

CN1: TTL Connector (MOLEX-87758-34 or compatibility)

| | | | | | | | |
|----|-------|----|-------|----|-------|----|-------|
| 1 | GND | 2 | DCLK | 3 | DHS | 4 | DVS |
| 5 | GND | 6 | DRED2 | 7 | DRED3 | 8 | DRED4 |
| 9 | DRED5 | 10 | DRED6 | 11 | DRED7 | 12 | GND |
| 13 | DGRN2 | 14 | DGRN3 | 15 | DGRN4 | 16 | DGRN5 |
| 17 | DGRN6 | 18 | DGRN7 | 19 | GND | 20 | DBLU2 |
| 21 | DBLU3 | 22 | DBLU4 | 23 | DBLU5 | 24 | DBLU6 |
| 25 | DBLU7 | 26 | GND | 27 | DEN | 28 | VCC |
| 29 | VCC | 30 | L/R | 31 | U/D | 32 | NC |
| 33 | NC | 34 | NC | | | | |

CN2: FPC Connector (Face down: ELCO 6210-40pin or compatibility)

The port compatible with the TFT-LCD TX18D11VAC

CN12: TTL Connector (Face down: ELCO 6210-32pin)

The port compatible with the TFT-LCD LQ080V3DG01

CN3: Key Connector (JST or compatibility)

| Pin NO | DEF. | Pin NO | DEF. |
|--------|-------|--------|------|
| 1 | LED-B | 5 | ADC1 |
| 2 | LED-G | | |
| 3 | GND | | |
| 4 | ADC2 | | |

CN5: Inverter Connector (JST B3B-XH-A or compatibility)

| Pin NO | DEF | Pin NO | DEF | Pin NO | DEF |
|--------|------|--------|-----|--------|--------|
| 1 | +12V | 2 | GND | 3 | On/Off |

CN15A: SPEAKER OUT Connector (JST B4B-XH-A or compatibility)

| Pin NO | DEF. | Pin NO | DEF. | Pin NO | DEF. |
|--------|-------|--------|-------|--------|------|
| 1 | GND | 3 | GND | | |
| 2 | R-OUT | 4 | L-OUT | | |

CN6: 12PIN VGA Connector (JST B12B-PH-K-S or compatibility)

| Pin NO | DEF | Pin NO | DEF | Pin NO | DEF | Pin NO | DEF |
|--------|-----|--------|-------|--------|-----|--------|-----|
| 1 | GND | 4 | GREEN | 7 | GND | 10 | GND |
| 2 | RED | 5 | GND | 8 | HD | 11 | NC |
| 3 | GND | 6 | BLUE | 9 | VD | 12 | NC |

CN17: 5PIN YPbPr Connector

| | | | | | |
|--------|------|--------|------|--------|------|
| Pin NO | DEF. | Pin NO | DEF. | Pin NO | DEF. |
| 1 | GND | 2 | Y | 3 | GND |
| 4 | Pb | 5 | Pr | | |

CN8: VIDEO AND S-VIDEO (JST B5B-PH-K-S or compatibility)

| | | | | | | | | | |
|-----|------|-----|-------|-----|-----|-----|------|-----|------|
| Pin | DEF. | Pin | DEF. | Pin | DEF | Pin | DEF. | Pin | DEF |
| 1 | GND | 2 | VIDEO | 3 | GND | 4 | C-IN | 5 | Y-IN |

CN11: 10PIN TV Connector (JST B10B-PH-K-S or compatibility)

| | | | | | |
|--------|----------|--------|------|--|--|
| Pin NO | DEF. | Pin NO | DEF. | | |
| 1 | GND | 5 | SDA | | |
| 2 | 5V | 6 | SCL | | |
| 3 | TV AUDIO | | | | |
| 4 | TV VIDEO | | | | |

CN4A: Power Connector (JST B2B-XH-A or compatibility)

| | | | |
|--------|------|--------|-----|
| Pin NO | DEF | Pin NO | DEF |
| 1 | +12V | 2 | GND |

CN1 : Power Connector

| | | | |
|--------|------|--------|-----|
| Pin NO | DEF | Pin NO | DEF |
| 1,2 | +12V | 3,4 | GND |

CN14C: AUDIO IN Connector (JST B4B-XH-A or compatibility)

| | | | | | |
|--------|------|--------|------|--------|------|
| Pin NO | DEF. | Pin NO | DEF. | Pin NO | DEF. |
| 1 | R-IN | 3 | L-IN | | |
| 2 | GND | 4 | GND | | |

KEY BOARD INTRODUCTION

1. Brief Diagram (Refer Appendix Page For Details)
2. Connector Definition

CN3——This connector connected to key operation port of driver board.

TV signal input:

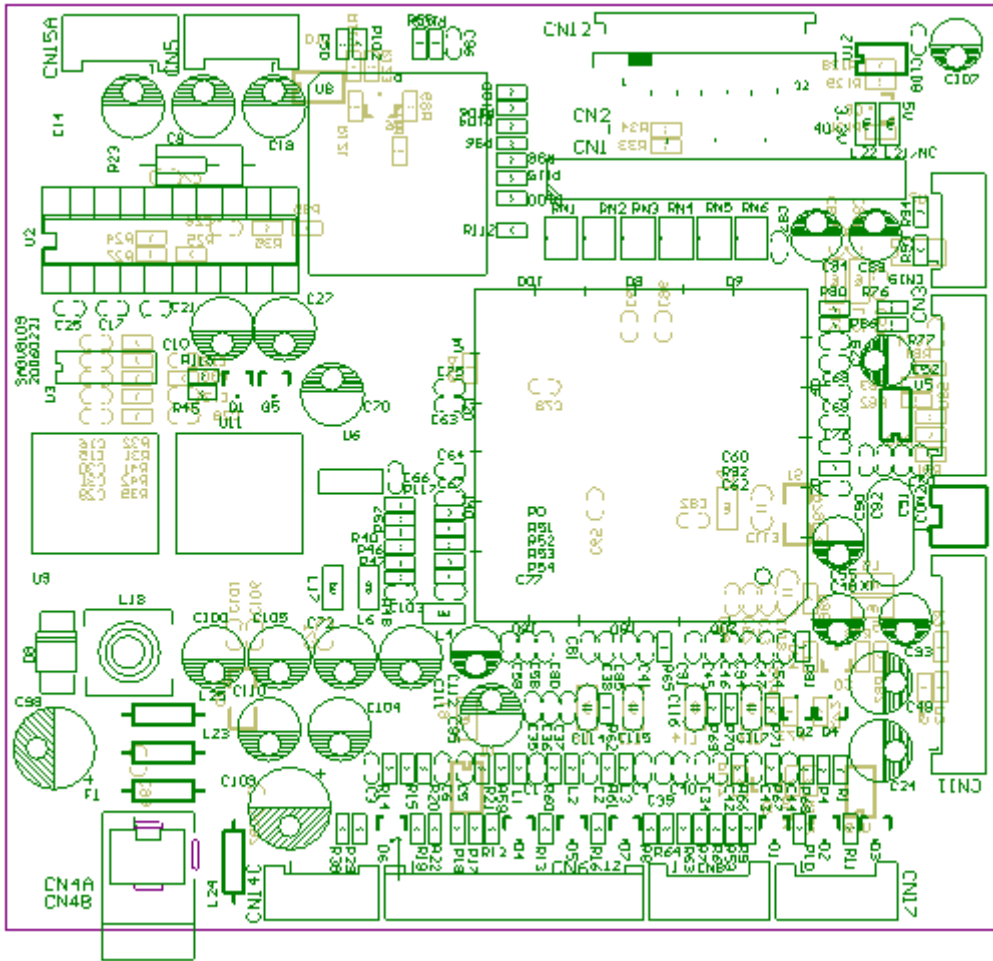
| MENU ITEM | SUBMENU | DESCRIPTION |
|------------|--------------|---------------------------------|
| TV Setting | Channel | Adjust the TV channel |
| | Color system | Adjust the color |
| | Sound | Select the audio frequency band |
| | Auto search | Auto search TV |

Notes:

- Do as foregoing description if want to get favorite image. But the best state is set before shipment
- Occasional flare of Image may occur when starting the LCD monitor, it is normal pheno mena because of auto adjustment internal.
- Particularly there is snow-flare and bad pictures because that timing does not match with the sequence, please execute auto or handle adjustment.

MECHANICAL DRAWING

Driver Board



Outline: 120*90*15MM
4 HOLES:90*71MM
Top layer High (Max): 14MM
Board Thickness: 1.6mm
Screws: D 3.0mm