

SPECIFICATION

SFTC-TTL

Customer Approved

Customer _____

Date _____

By _____

Sailing's Confirmation

Approved By _____

Prepared By _____

Date: 2005.1.10

CONTENTS

General description.....	2
Features.....	2
Brief diagram.....	2
Port definition.....	2
Pin assignments.....	3
Mechanical drawing.....	4

General description:

The data sheet applied to some color TFT LCD, PD035VX2,PM042OX1,PM070WX1,PM090WX1/2, , It could generate all kinds of timing control signal to the LCD source and gate drivers.

Note: PM042OX1 display format is 320*(R.G.B)*96; to get correct picture, the input signal must be limited by the format.

Features:

- ★ Support TTL input
- ★ Provide timing scan for up/down and left/right shift control
- ★ Single power supply: 5V or 3.3V DC

Brief diagram: Refer to appendix.

Port definition:

- 1) CN13——Reserve.
- 2) CN1 ——TTL signal input port
- 3) CN12——Output port for TFT LCD PD035VX2
- 4) CN15——Output port for TFT LCD PM042OX1,PW070WX1,PM090WX1/2,PM102WX1/2

Pin assignment:

CN13: LVDS signal input (Reserve)

Connector type: MOLEX 55177-1491 or compatibility

Pin NO.	Description	Pin NO.	Description
1	5V or 3.3V Power input	8	DA1+
2	5V or 3.3V Power input	9	DA2-
3	Power ground	10	DA2+
4	Power ground	11	CLK-
5	DA0-	12	CLK+
6	DA0+	13	Ground
7	DA1-	14	Ground

CN12: TTL Connector

Connector type: 50pin 0.5 mm pinch FPC connector or compatibility

1	DIO1	14	G1	27	POL	40	U/D
2	GND	15	G2	28	DIO2	41	CKV
3	VDD1	16	G3	29	GND	42	STVU
4	CLK	17	G4	30	V3	43	STVD
5	R/L	18	G5	31	V5	44	VGG
6	R0	19	B0	32	V7	45	GND
7	R1	20	B1	33	V8	46	VCC
8	R2	21	B2	34	V10	47	VEE
9	R3	22	B3	35	V12	48	VLED
10	R4	23	B4	36	GND	49	GLED2
11	R5	24	B5	37	VDD2	50	GLED1
12	GND	25	LD	38	VCOM		
13	G0	26	REV	39	OE		

CN15: TTL Connector

Connector type: Two pieces 30pin 0.5 mm pinch FPC connector or compatibility

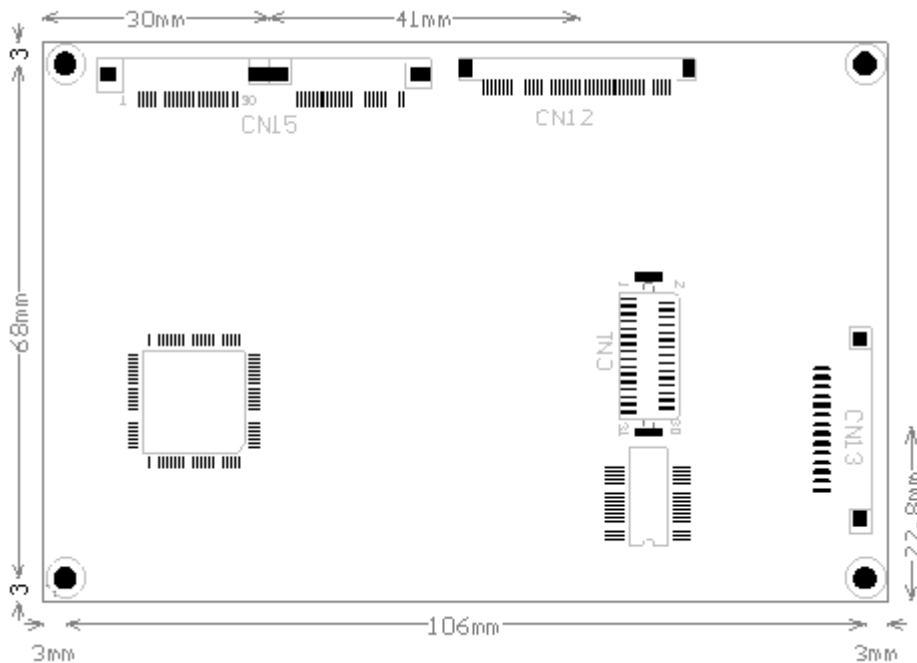
CN15-1				CN15-2			
1	DIO1	16	G2	1	GND	16	V14
2	GND	17	G3	2	V1	17	GND
3	VDD1	18	G4	3	V2	18	VDD2
4	CLK	19	G5	4	V3	19	VCOM
5	GND	20	GND	5	V4	20	XON
6	R/L	21	B0	6	V5	21	OE
7	R0	22	B1	7	V6	22	U/D
8	R1	23	B2	8	V7	23	CKV
9	R2	24	B3	9	GND	24	STVU
10	R3	25	B4	10	V8	25	STVD
11	R4	26	B5	11	V9	26	VGG
12	R5	27	LD	12	V10	27	GND
13	GND	28	REV	13	V11	28	VCC
14	G0	29	POL	14	V12	29	GND
15	G1	30	DIO2	15	V13	30	VEE

CN1: TTL signal input

Connector type: DF9A-31P-1V or compatibility

Pin NO.	Description	Pin NO.	Description
1	Ground	2	Clock input
3	HSYNC input signal	4	VSYNC input signal
5	Ground	6	Red signal input 0 (LSB)
7	Red signal input 1	8	Red signal input 2
9	Red signal input 3	10	Red signal input 4
11	Red signal input 5 (MSB)	12	Ground
13	Green signal input 0 (LSB)	14	Green signal input 1
15	Green signal input 2	16	Green signal input 3
17	Green signal input 4	18	Green signal input 5 (MSB)
19	Ground	20	Blue signal input 0 (LSB)
21	Blue signal input 1	22	Blue signal input 2
23	Blue signal input 3	24	Blue signal input 4
25	Blue signal input 5 (MSB)	26	Ground
27	DEN	28	Power input (5V)
29	Power input (5V)	30	Right/Left
31	Up/Down		

Outline:



Outline: 112.0*74.0*10mm

Top Layer High (Max): 8.0 mm

Board Thickness: 1.6mm

Screw: D2.5mm*4